

# Integrating New Technology and Treatments

**Mayank Gupta, MD**

President, Kansas Society Of Interventional Pain Physicians

CEO, Kansas Pain Management

Adjunct Clinical Assistant Professor, Kansas City University



# Financial Disclosure

**Mayank Gupta, M.D**

**President & CEO Kansas Pain Management and Neuroscience Research Center, LLC**

---

## **Disclosures**

Scientific Advisory Board: Nevro Corp.; Vertos Medical Inc., Nalu, Averitas pharma

---

Scientific Research: Nevro Corp.; Vertos Medical Inc.; Biotronik, Inc.; Nalu, Averitas pharma.

---

Speaker's Bureau: Nevro Corp.; Vertos Medical Inc, Nalu, Averitas pharma.

---

Stock Holder: No

---

Stock Options: None

---

Product Royalties: None

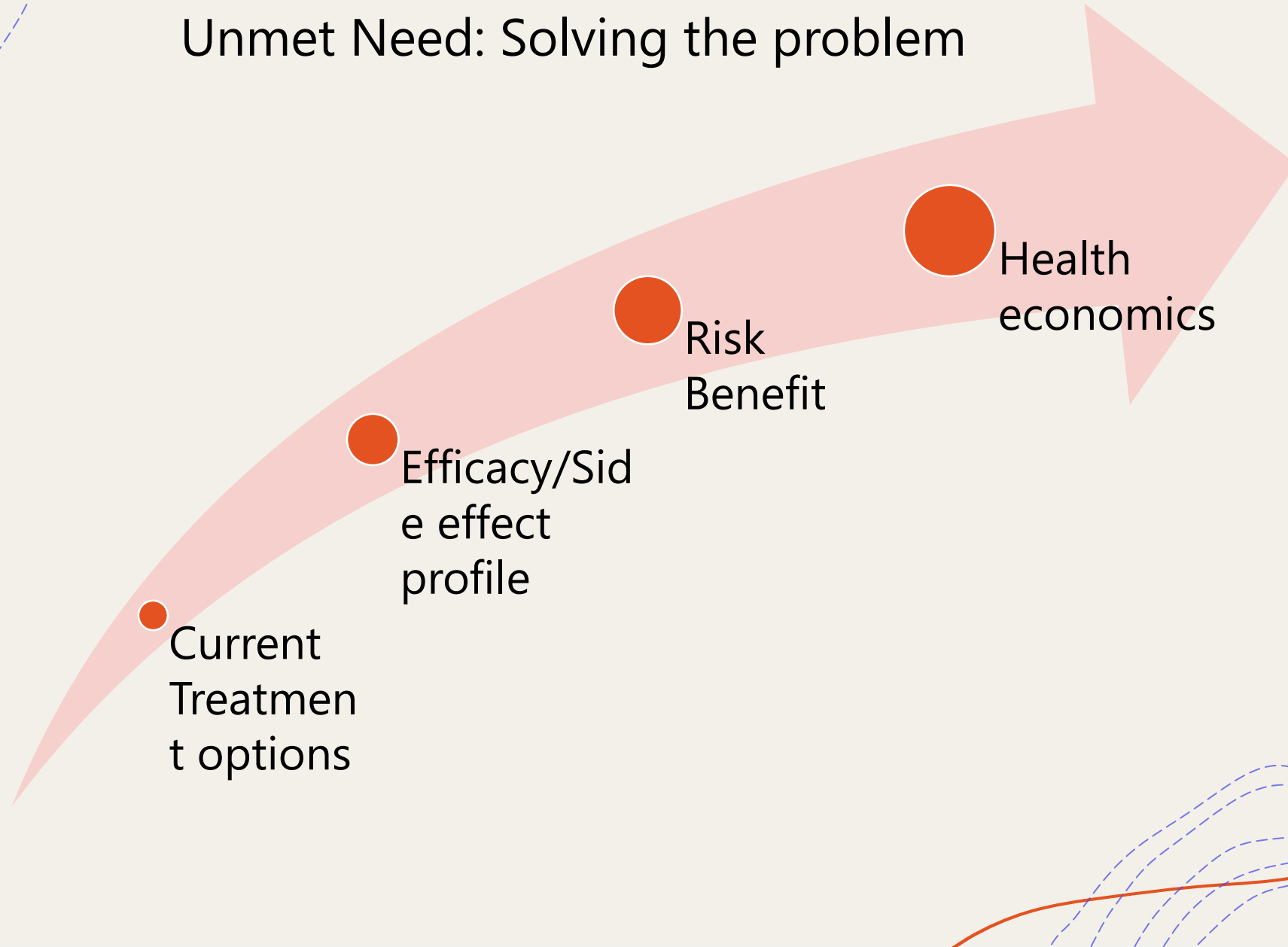
---

Employed by: Kansas Pain Management & Neuroscience Research Center, LLC

---

Any off label uses of devices or products will be disclosed and discussed in a balanced manner.  
No commercial company or product names or logos will be used in this presentation.

# Unmet Need: Solving the problem



## Adopting New Technology

The diagram features a large, light red arrow pointing to the right. Inside the arrow's shaft are three orange rounded rectangular boxes containing the text 'Science', 'Evidence', and 'Analyze literature' respectively. Above the arrow's tail is a red rectangular box with the text 'Adopting New Technology'. The background is light gray with decorative blue dashed lines and white circular shapes in the corners.

Science

Evidence

Analyze  
literature

# Developing a plan

Training  
provider and  
staff



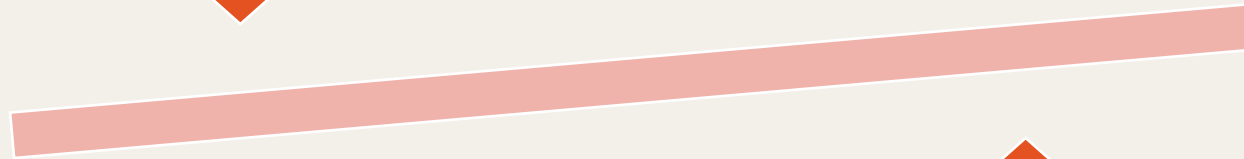
Medical  
necessity /  
Documentation



ICD / CPT  
code  
analysis/  
Reimburse-  
ment/Payers  
coverage  
policy



Preauthorization  
Patient expectation  
Documentation



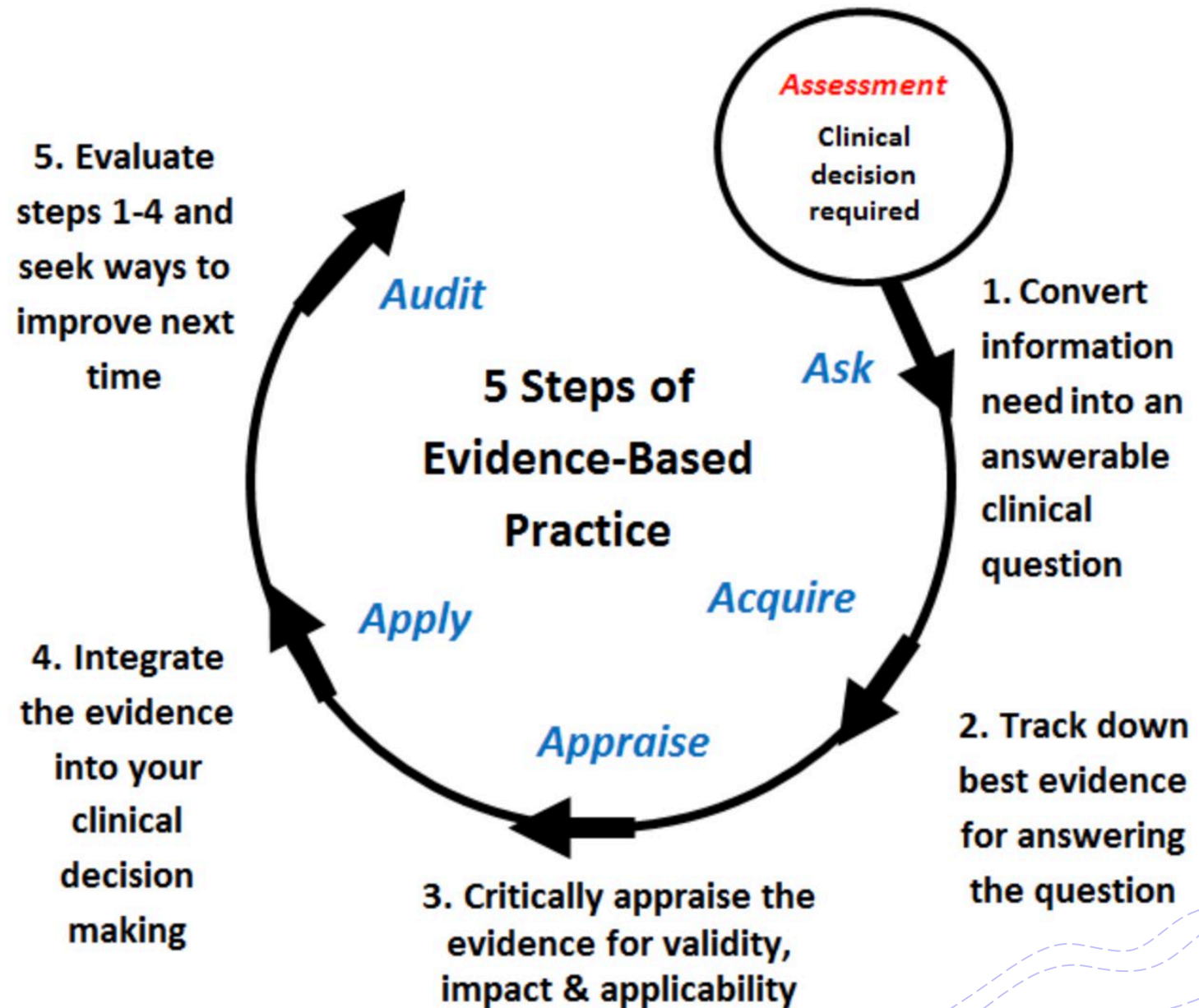
Apply  
for  
privilege  
s



# Learning Objectives

- +Evidence-Based Practice
- +Literature Review
- +Analyzing Data
- +Evaluating Patient Complications & Safety
- +Educating Physician Staff & Secondary Providers

# How to practice EBM



Adapted from Sackett et al 2011, Evidence-based medicine: how to practice and teach EBM



# Literature Review<sup>1</sup>

## + Literature Review

- + Use literature to inform professionals & patients of best available evidence when making healthcare decisions<sup>1</sup>

## + Critically appraise evidence and literature<sup>2</sup>

- + Validity – can you trust it
- + Impact – are the results of clinical importance
- + Applicability – can you apply this to your patient base

# Evaluating Complications & Safety<sup>3</sup>

- +Analyze date for Adverse outcome
- +Percentage incidence/ severity
- +Short term and long term complication

# Educating Secondary Providers & Physician Staff

- + Educating secondary Providers (APRN, RN) and additional physician staff can help the practice be more cohesive, leading to better patient care
  - + Education seminars
  - + Consistent meetings and communication
  - + Educating support Staff

# References

1. Smith J, Noble H, Reviewing the literature, *Evidence-Based Nursing* 2016;**19**:2-3.
2. Turner, M. (2014). "Evidence-Based Practice in Health." Retrieved from University of Canberra website: <https://canberra.libguides.com/evidence>
3. Rodziewicz TL, Houseman B, Hipskind JE. Medical Error Reduction and Prevention. [Updated 2022 Jan 4]. In: StatPearls [Internet]. Treasure Island (FL): StatPearls Publishing; 2022 Jan-. Available from: <https://www.ncbi.nlm.nih.gov/books/NBK499956/>